

TROUBLESHOOTING SQL SERVER 2005 EXPRESS CONNECTION ISSUES

On the PC running SQL Server 2005 Express

In Windows 2000 and XP Select START, In Windows Vista click the Windows Start Logo

Select ALL PROGRAMS

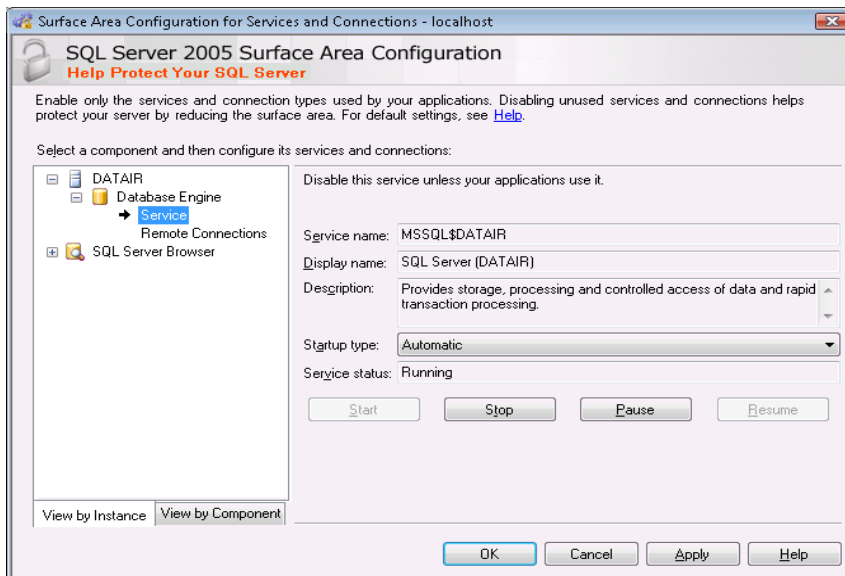
Select Microsoft SQL Server 2005

Select Configuration Tools

Select SQL Server Surface Area Configuration



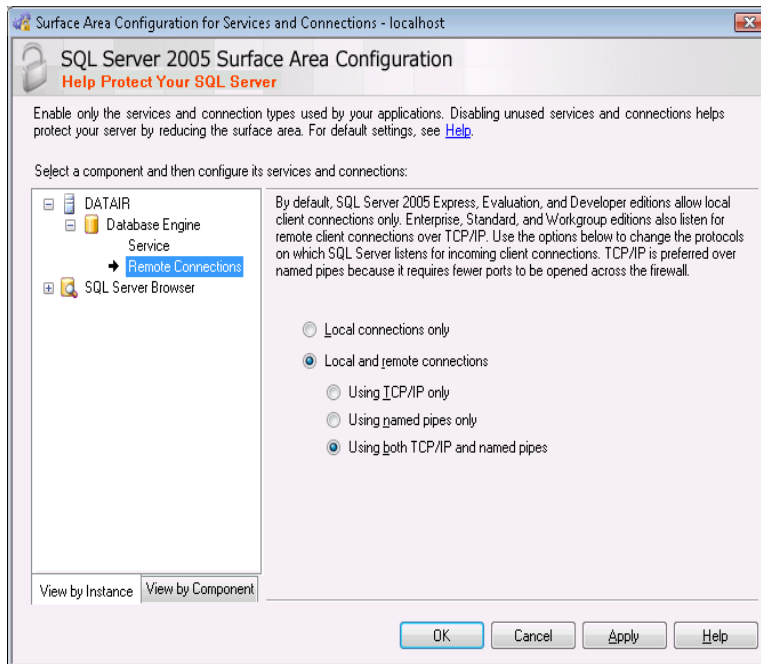
Select Surface Area Configuration for Services and Connections



Select DATAIR

Select Database Engine

Select Remote Connections



Make sure that that “Local and remote connections” is checked

Also make sure that “Using both TCP/IP and named pipes” is checked

Click OK to exit

Exit the SQL Server 2005 Surface Area Configuration screen by clicking the X in the in the upper right hand corner

On the PC running SQL Server 2005 Express

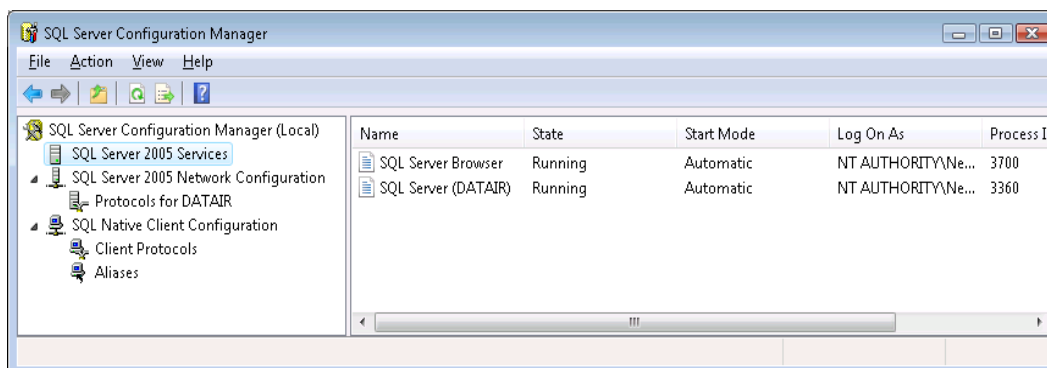
In Windows 2000 and XP Select START, In Windows Vista click the Windows Start Logo

Select ALL PROGRAMS

Select Microsoft SQL Server 2005

Select Configuration Tools

Select SQL Server Configuration Manager



Select SQL Server 2005 Services

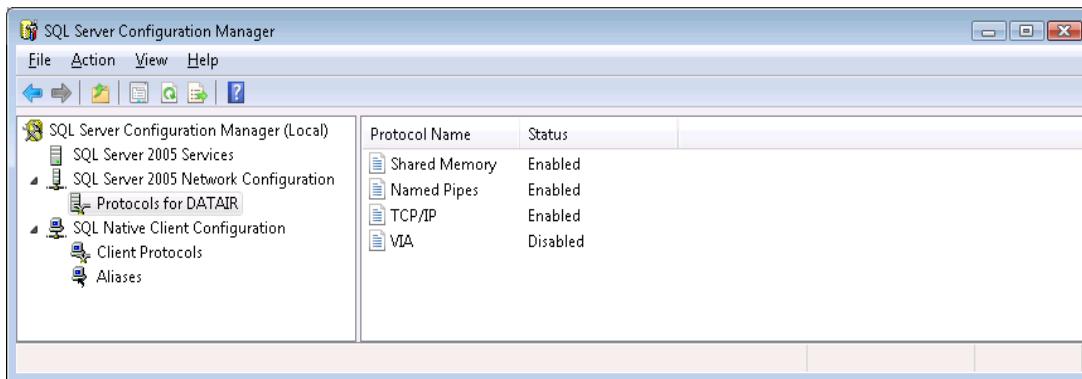
Ensure that the SQL Server Browser is “Running”

Also ensure that the SQL Server (DATAIR) is 'Running’

(If either is not showing as “Running”, then highlight the item and right click, select START)

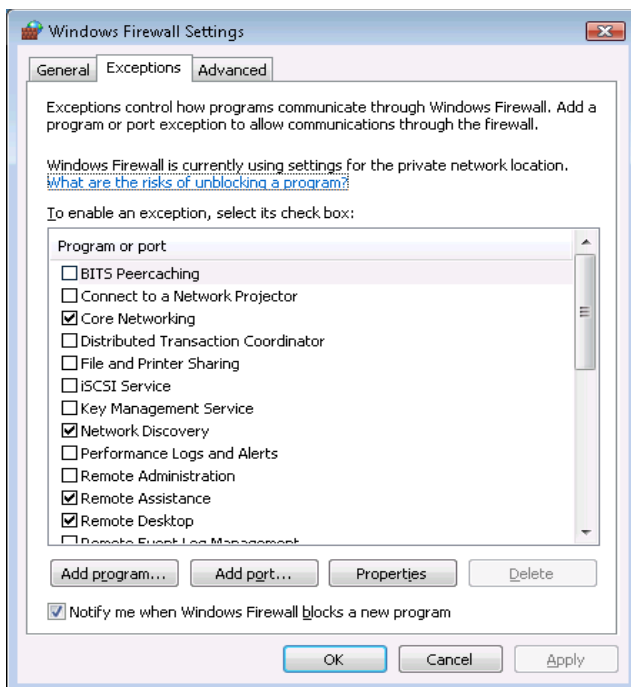
Select SQL Server 2005 Network Configuration

Select Protocols for DATAIR

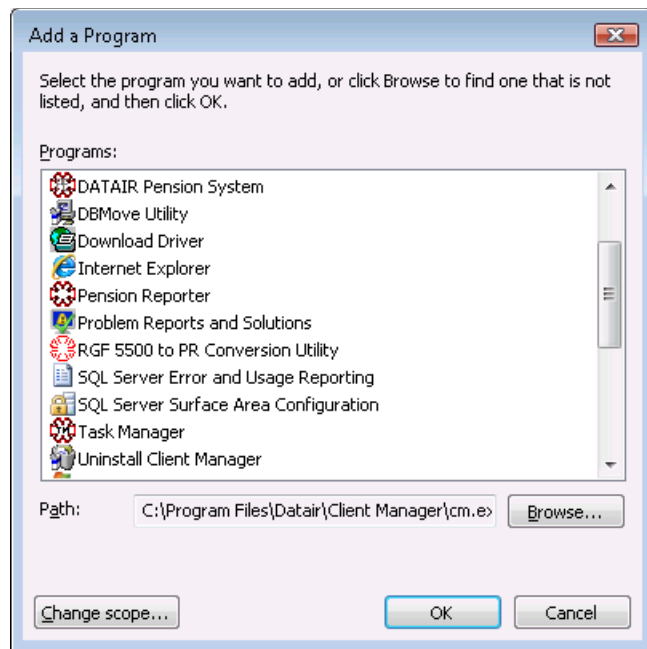


Ensure that “Named Pipes” and “TCP/IP” are listed as “Enabled”
(If they are not listed as “Enabled” then right click on the item and select “Enable”)
Close the program by selecting the X in the upper right hand corner

You will need to set up an exception in your Firewall for SQL Server 2005
(These instructions assume that you are using the Windows Firewall, if you are using another Firewall you will need to refer to that particular Firewall's instructions for setting up exceptions)
On the PC running SQL Server 2005 Express
In Windows 2000 and XP Select START, In Windows Vista click the Windows Start Logo
Select Control Panel
Select Windows Firewall or under Security select “Allow a program through Windows Firewall”



Select the Exceptions tab
Click the Add program tab



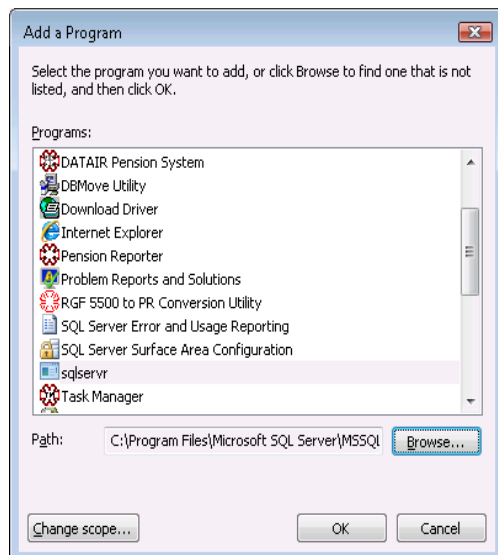
Click the Browse button

Navigate to the following folder:

C:\Program Files\Microsoft SQL Server\MSSQL.1\MSSQL\Binn

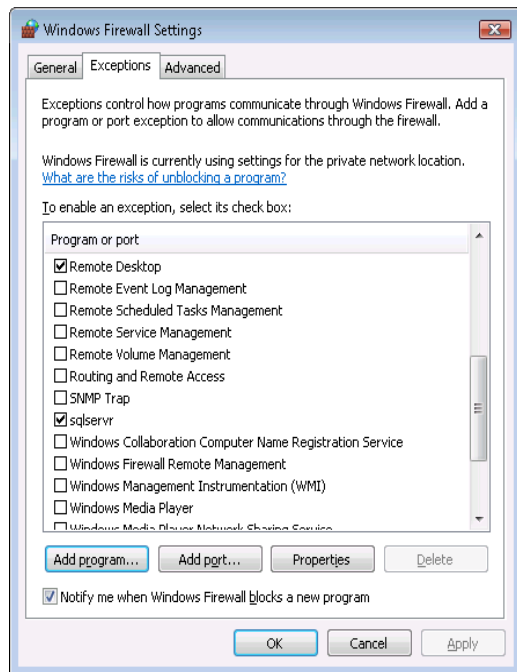
Click on the sqlserver.exe file

Click the Open button

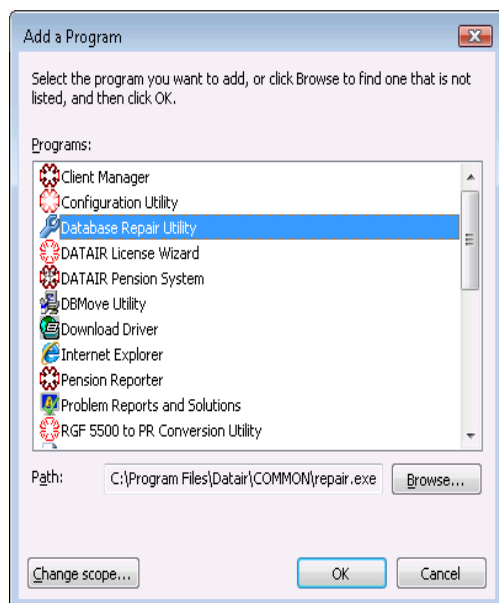


Click the OK button on the Add a Program window

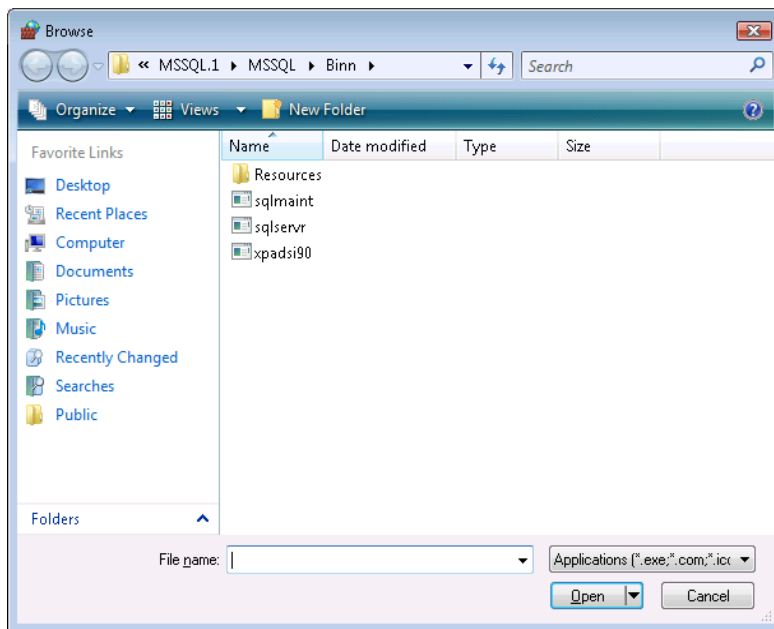
This will take you back to the Windows Firewall Settings dialog



Click the Add program button once again

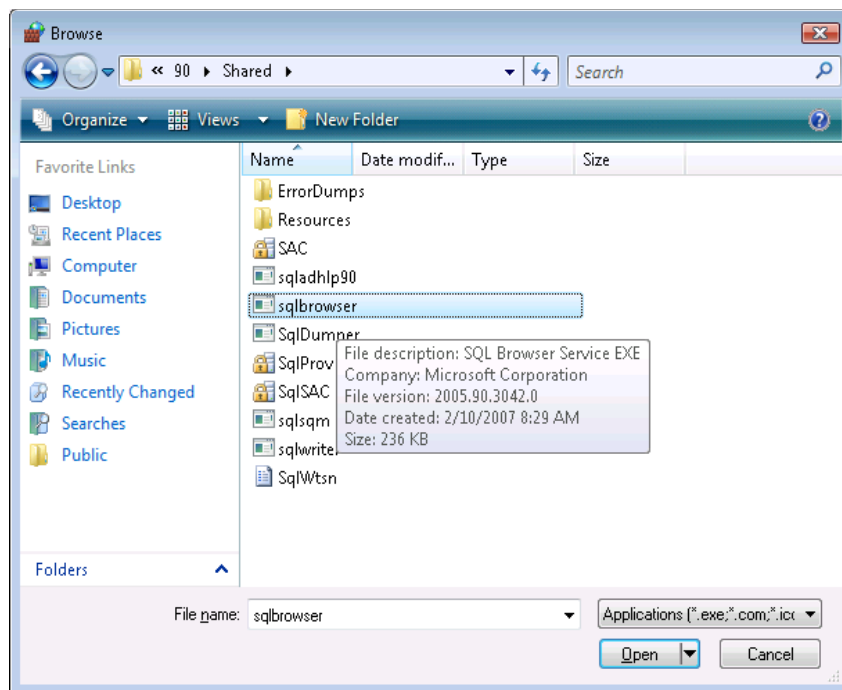


Click the Browse button



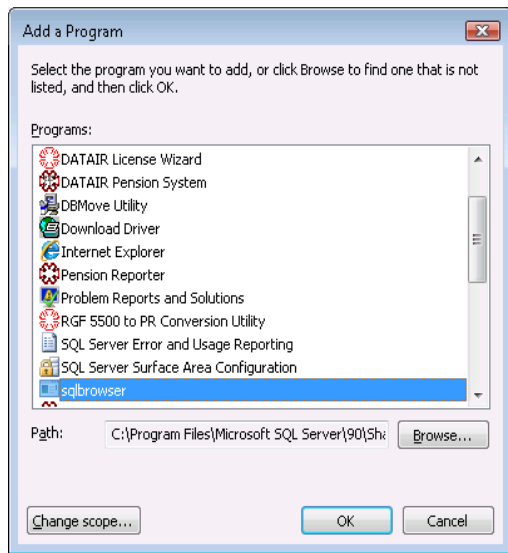
Select the following folder:

C:\Program Files\Microsoft SQL Server\90\Shared

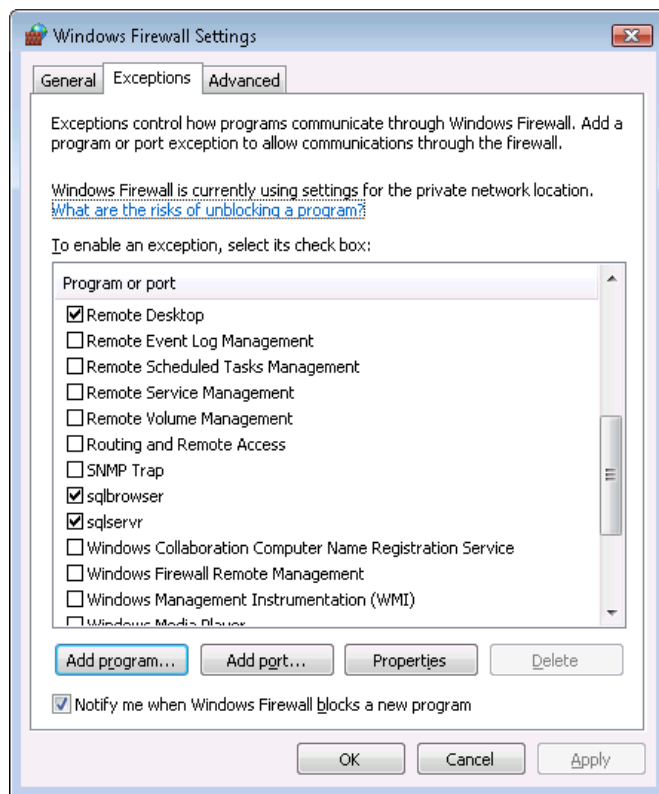


Click the file named sqlbrowser

Click the Open button



Click the OK button on the Add a Program screen



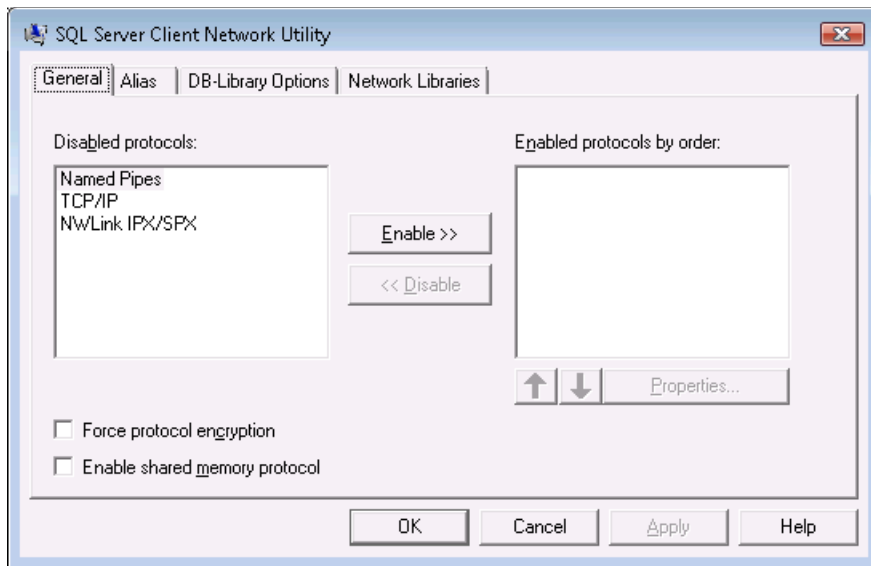
Click the OK button to close the Windows Firewall Settings

Try to see if you can now connect to the SQL Server

If you are still having connection problems after making any changes, you will need to reboot the PC running the SQL Server 2005 software.

On a PC attempting to connect to the SQL Server
In Windows 2000 and XP Select START
RUN
In the RUN box type the following and click OK
CLICONFG

In Windows Vista click the Windows Start Logo
In the “Start Search” box type the following and hit Enter
CLICONFG



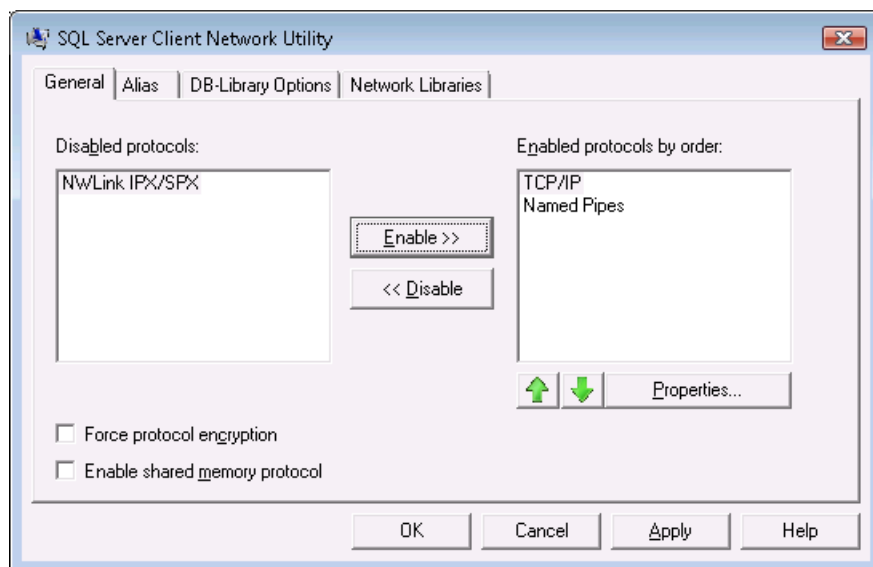
Select the General Tab

If the following protocols are disabled, enable them

TCP/IP

Named Pipes

You enable them by highlighting the protocol and clicking the Enable button



Click OK to close the utility after enabling the protocols